



OX
PROP
FEST.

VENUE: BICESTER MOTION
BICESTER, OXFORDSHIRE
WEDNESDAY 14TH SEPT

POWERED BY

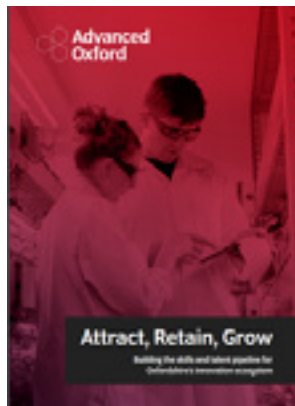
UK PROPERTY
FORUMS.

DAY
PROGRAMME
2022



Working together to grow the innovation economy

Advanced Oxford is a not-for-profit, independent, membership organisation for companies, institutions and organisations that are committed to supporting the development of Oxfordshire's innovation economy.



For our priorities, interests, news, research and information about our members: www.advancedoxford.com

Linked  advanced-oxford  @advanced_oxford

SOLVING THE BUSINESS OF SCIENCE

Launched in May 2022, ARC concentrates companies in Advanced Research Clusters — place-based clusters at the leading edges of major knowledge economies like Oxford and London. These unique ecosystems accelerate commercial growth by providing the best possible working environments for our members.

We work as a genuine partner to create and manage open innovation clusters which foster collaboration and creativity. Today, ARC runs 4 clusters located in London and Oxfordshire, home to over 250 leading science and innovation organisations.

We understand the challenges that science businesses face in scaling up and are making significant investments in our UK clusters to create truly world-leading environments that foster innovation and growth.

If innovation is about a better future, we believe we must first create a better future for innovation.

ARC.

arcgroup.io

THANK YOU

THANK YOU TO ALL
OUR SPONSORS

FESTIVAL PARTNERS



EVENT PARTNERS



EXPO PARTNER

WALK & EVENTS PARTNER

TALK PARTNER

FRINGE PARTNER

MUSIC

CATERING

BEER



MEDIA PARTNERS



CHARITY PARTNERS



RECEPTION PARTNER





From our earliest days as architects and planners pioneering the profession, to today where we span all sectors and numerous specialisms, we have striven to be leaders in our field.

Now, we join Stantec - designers, engineers, environmental scientists and project managers - who believe, as we do, that nurturing the communities we create, serve and employ, is fundamental to success.

Together, alongside you, our clients - we are better together. 

#bettertogether
www.bartonwillmore.co.uk

BARTON WILLMORE now  **Stantec**



Image: Amy Shore Photography


**BICESTER
HERITAGE**

THE HOME OF HISTORIC MOTORING

bicesterheritage.co.uk

WELCOME



Over the past 12 months a lot has changed. Just as we thought we had successfully navigated away from a global pandemic and the restrictions which COVID-19 forced on all of our lives we have now jumped into an energy 'war' with Russia. This has forced us all to re-think our approach to not only the property market but how we approach our daily lives.

As the world has changed and evolved in front of our eyes, the Oxfordshire market has maintained its position as one of the most active and exciting markets for all those working across the disciplines of development, property, architecture, and construction. Underpinning this increased activity is the Life Science and associated markets which continues to demand new space, drive up yields and create supply.

One thing we have all learnt during this turbulent period is that one thing is constant and that is - change! Today's programme reflects this increased activity and the many exciting new ideas and projects which are happening in Oxfordshire. With more than 30 speakers and panellists, we are confident that we have content which will suit everyone's interests.

Matthew Battle

Founder + Managing Director

UK Prop Fest + UK Property Forums

**UK PROPERTY
FORUMS.**

LET'S BE SOCIAL

Do you have an image worth sharing on social media? Keep in touch with us during the day by using either of the hash tags #

#OXPF22

#OXPropFest22

Connect with us at

 **@UKPropForums**

 **@ukpropertyforums1**

 **@ukpropertyforums**

 **@ukpropertyforums**

The logo for devcomms, featuring the word 'devcomms' in a white, lowercase, sans-serif font. Below the letters 'o', 'm', and 'm' are three small, solid purple circles. The logo is set against a dark purple curved background element.

Helping you to change perceptions of development

We are stakeholder engagement specialists to the property development industry and help our clients secure planning permissions and strategic plan allocations. We also provide support during the construction phase.

We change the perceptions of development through constructive engagement with stakeholders, leaving a positive legacy for our clients and communities.

We offer:

- Strategy development
- Political engagement
- Community consultation
- Digital and social media engagement
- Construction PR
- Media relations
- Monitoring
- Design
- Reputation management
- Corporate guidance

www.devcomms.co.uk
info@devcomms.co.uk
01296 678320

The logo for Harrington, featuring a large, stylized white 'H' with a circular cutout in the center. Below the 'H' is the word 'Harrington' in a white, serif font. The logo is set against a green-tinted background image of a family walking on a path.

A new highly sustainable 21st century market town

Designed with everything in place for residents to lead a healthy, low carbon lifestyle in a vibrant new community

A commitment to biodiversity, health and wellbeing, sustainability, great services and protecting the wider environment

A place which is full of life and designed to meet the needs of South Oxfordshire

Visit: www.harringtonnewsettlement.co.uk



EXPO

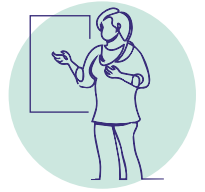
OX
PROP
FEST.

Using the unique backdrop of Hangar 113, exhibitors can showcase their services and products in an environment guaranteed to generate business development opportunities

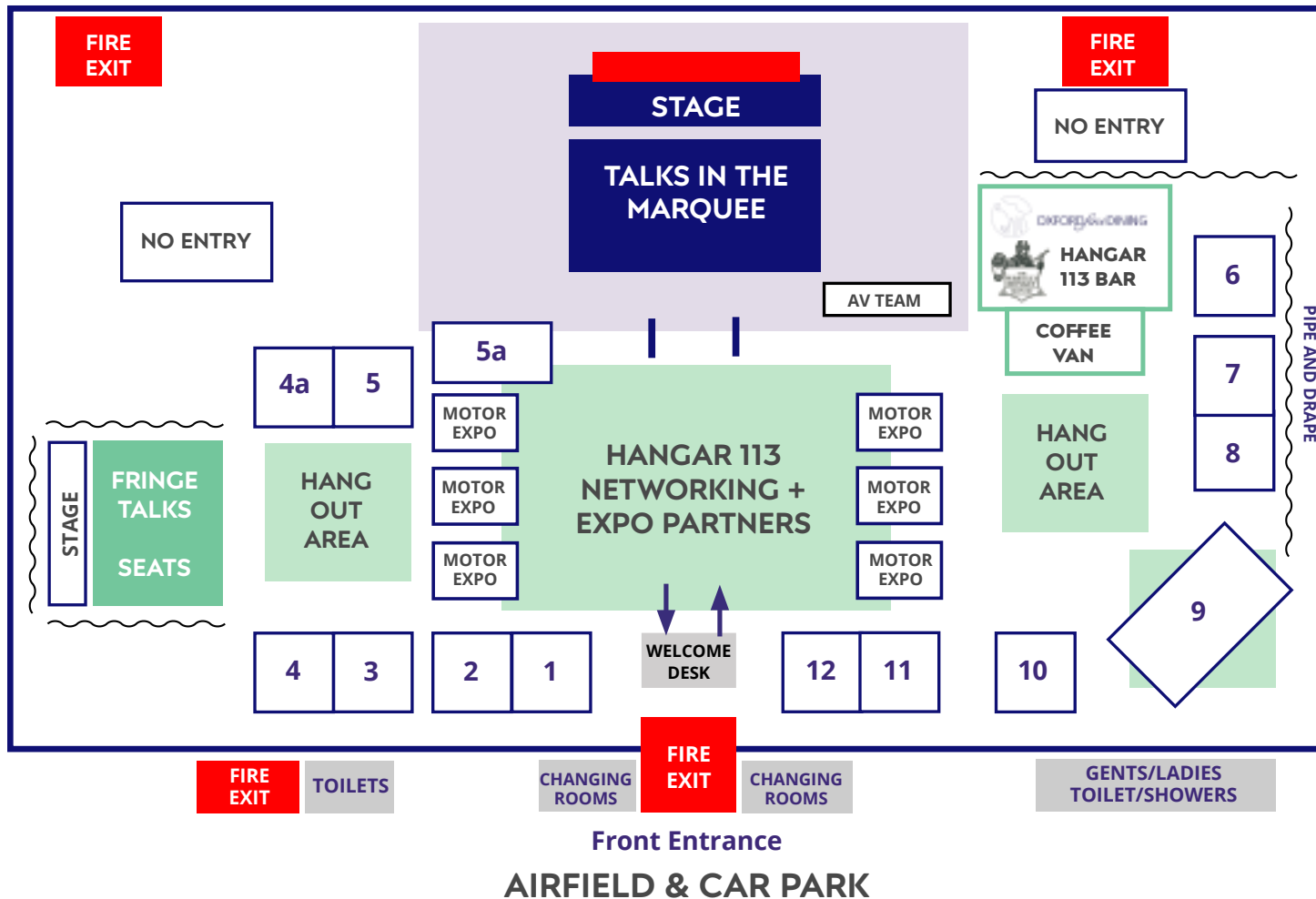
EXPO

SPONSORED BY

L O O M A
Innovation | Immersion | Intelligence



We have designed our festival layout to maximise the time you have to visit the stands of our partners and exhibitors in our Expo area, listen to the Talks and join the Walks. Immerse yourselves in all that our property community has to offer in these exceptional times.



EXPO PARTNERS

- 1 DevComms
- 2 Milton Park
- 3 ASA Landscape Architects
- 4 Edgars
- 4a WWA
- 5 Oxford Technology Park
- 5a Bidwells
- 6 Oxford Office Furniture
- 7 Looma
- 8 Oxford North
- 9 Savills
- 10 Mode
- 11 Cherwell District Council
- 12 ARC

POP UP STANDS

- OxWED
- Resonant Architecture
- UK Property Forums
- Winckworth Sherwood



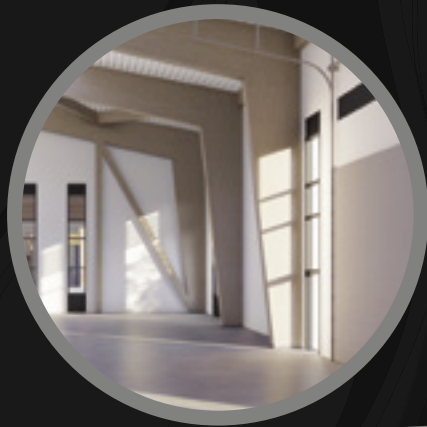
Where science and technology companies can thrive

Nebula

Seven new R&D workspaces with high eaves, wide access doors and an enhanced power supply.

Ready for occupation Q3 2023.

6,000 sq. ft. up to a single building of 30,000 sq. ft. (557 - 2,787 m. sq.).



190-192 Park Drive, Milton Park, Oxfordshire OX14 4SE

///brimmed.space.insert

Join us
miltonpark.com

AN MEPC ASSET

SUPER CHARGED TRANSPORT ADVICE



At its 10th year, mode is looking ahead to the next 10. With their depth of professional experience and connection with some of the major players in the industry, to offer their clients something unique. With the challenges facing us, a major one being the changing face of transport. We're moving away from traditional, constraining solutions to meet this need to shift gears and plan for the changing paradigm.

OUR CORE SERVICES

- › transport assessment
- › travel plans
- › transport inputs to masterplanning
- › sustainable transport studies
- › transport policy review
- › research and development
- › junction design
- › traffic modelling
- › public consultation
- › inputs to public realm design
- › section 106 negotiation
- › expert witness at planning inquiries

modetransport.co.uk

WALKS

OX
PROP
FEST.

Exclusive tours of the Bicester
Motion development plans and
the unique environment of which is
Bicester Heritage

WALKS

This year we have arranged for two DAF 45/150 Truck's to take 12 guests at a time around the whole of the Bicester Motion including the area designated for new development.

Each trip will take around 45 minutes and be hosted by a guide from Bicester Motion. This will be a truly 'different' type of Walk for all those lucky enough to get a seat on the truck!

SPONSORED BY



BICESTER
MOTION



BIKEAROUND

OX
PROP
FEST.



Get peddling and join us to take in the key sites around Oxford and the Oxfordshire property market

BIKEAROUND

SPONSORED BY



The inaugural ride **Bike Around OxPropFest**, designed with help from James Dipple and Jenni Montgomery from Barton Willmore now part of Stantec, will leave from the front entrance of Hangar 113 at 9.30am and return at 1.00pm.

The route has been designed to include some new developments and the City of Oxford. We hope that this will become a regular feature of OxPropFest





Creating the community of the future

We're building a sustainable new place for Oxford.

It will be a unique home and workplace for scientists, technologists, and inventors, transforming lives and the city.

Find out more — oxfordnorth.com



We are proud to support OxPropFest 2022!

Ready to take the next step on your business journey?

Complete our business support tool and let us find the right support for you...



www.oxfordshirelep.com
info@oxfordshirelep.com
0345 241 1196

TALKS

OX
PROP
FEST.



Listen to the people making the decisions on the future of the region and be challenged by speakers with different views and solutions which reflect our changing world

TALKS

FRINGE SPONSORED BY

TALKS SPONSORED BY



INTRODUCTION

The Talks in 2022 have been refreshed and re-imagined. Building on the successful format from 2021, the sessions have been designed with a particular focus on how the rapidly expanding Life Science and Science and Technology sectors are driving the property market in Oxfordshire. We will also be including a new feature: our 'Fringe Talks' will present exclusive progress reports on live projects happening in Oxfordshire.

MARQUEE TALKS

OxPropFest has always sought to be at the cutting edge of the discussion and debate amongst the Oxfordshire real estate, property, planning, architectural and construction community. This year is no different – we have designed four excellent Talks to capture the mood of the county and these will provide attendees with the opportunity to hear from many of the key decision makers operating in the sector.

FRINGE TALKS

New for 2022, these Talks will be held live in Hangar 113 during the day and will focus on the major projects which are under construction and being delivered across Oxfordshire. For many years Oxfordshire has talked a good game but been slow on the actual delivery of projects. Now the county can boast several £M/M projects which have received planning permission and are now emerging from the ground. The Fringe Talks will review some of these projects with the client and project teams, asking the big questions about the project.



TALKS

9.00am MARQUEE – TALK ONE

Welcome and Introduction

MATTHEW BATTLE, Managing Director, UK Property Forums and
DAN GEOGHEGAN, CEO, Bicester Motion

9.10am

OxPropFest: View from the Bridge

CLLR LIZ LEFFMAN, Leader of the Council, Oxfordshire County Council

09.30 – 10.20

The Boston Experience: How the USA is shaping and defining our approach towards the current growth of the Life Science and Tech markets in the UK?

CHAIR

CHARLIE ROWTON-LEE, Director and Head of Commercial Agency, Savills, Oxford

PANEL

DOUGLAS CUFF, Vice President of U.K. Real Estate for IQHQ, San Diego, Boston and the Golden Triangle, UK

STUART GRANT, CEO, ARC (tbc)

STEVE LANG, Director and Head of Office and Life Research, Savills

FRINGE SPONSORED BY



10.30 – 11.15

HANGAR 113 - FRINGE ONE

Life Mind Building, Oxford

Exclusive opportunity to get an update from the project team responsible for delivering this £200m project in Oxford.

CHAIR

MATTHEW BATTLE, Managing Director, UK Property Forums

PANEL + SPEAKERS

CHRIS KENNARD, Emeritus Professor and Senior Responsible Officer University of Oxford

INGO BRAUN, Design Director, Architect NBBJ

JEREMY WAGGE, Design Director, Wates

11.30 – 12.20

MARQUEE – TALK TWO

**Clusters, Collaboration and Innovation Hubs
Are we creating successful eco-systems in Oxfordshire and how do we ensure that they are viable? This session will also showcase some examples of successful completed innovation projects.**

CHAIR

SARAH HAYWOOD, Managing Director Advanced Oxfordshire

TALKS SPONSORED BY



PANEL + SPEAKERS

PHILIP CAMPBELL, Commercial Director, Milton Park

ADAM SMITH, Development Director, Stanhope
ANGUS BATES, Oxtec Developments – Developer of OTP

NIGEL TIPPLE, Chief Executive Officer, OxLEP

12.30 – 13.15

HANGAR 113 – FRINGE TWO

Building a sustainable future for Oxford and Life Sciences

CHAIR

MATTHEW BATTLE, Managing Director, UK Property Forums

PANEL + SPEAKERS

GREG MITCHELL, Executive Planning Director, Summix

AMY GILHAM, Director – Economics, Turley

SARAH HAYWOOD, Managing Director, Advanced Oxford

12.00 – 14.00

LUNCH SERVED FROM IN HANGAR 113

Food and drink to be served by Oxford Fine Dining and the Wiggly Monkey Brewery

TALKS

From 12.30 – 14.00

WALKS (Sponsored by Bicester Motion)

Meet at Welcome Desk (first come first served and 12 people per tour and will last 45 minutes). Working closely with Bicester Motion and SWB Motorsport, we have arranged for two DAF 45/150 Army Trucks to take guests around the Bicester Motion site.

13.30 – 14.20

MARQUEE – TALK THREE

INVEST PROP FEST Why is the Oxfordshire market attracting so much interest from the property investment and real estate market? Which sectors are 'hot' and will it all continue or is it a bubble waiting to burst?

CHAIR

ROB ALLAWAY, Managing Director, Dev Comms

PANEL + SPEAKERS

ADAM WORKMAN, Head of Investment, Oxford University Innovation

PETE WILDER, Property Director, Oxford Sciences Enterprises

PETER ANGELOPOULOS, Director, Investments, Cadillac Fairview

ANNA STRONGMAN, CEO, Oxford University Developments

FRINGE SPONSORED BY



14.30 – 15.15

HANGAR 113 – FRINGE THREE

The Bee House @ Milton Park:

How a tired and unloved building was turned into something new and shiny!

PANEL + SPEAKERS

SUZANNE O'DONOVAN, Architect, SRA Architects

NIKKI GIBSON, Snr Associate & Head of Flexible Workplace, Ashdown Philips & Partners

15.30 – 16.20

MARQUEE – TALK FOUR

Supercharging The Oxford Science Park

How the demand for additional lab space across the Oxford-Cambridge Arc is being met.

CHAIR

RICHARD TODD, Regional Office Partner (Oxford) – Project Management, Bidwells

PANEL + SPEAKERS

RORY MAW, Chief Executive, the Oxford Science Park & Fellow, Magdalen College Oxford

IAN BOGLE, Founder & Creative Director, Bogle Architects

ED HAYDEN, Director, Scott Brownrigg

TALKS SPONSORED BY



16.30 - 17.15

HANGAR 113 – FRINGE FOUR

40° Construction – Building in Sustainability Describing the 'net zero' context and regulatory frameworks and setting them against examples of completed projects in Oxfordshire. How are we responding to the challenges caused by climate change and the need to adopt a more sustainable approach to the design and construction process?

CHAIR

HUGH BLAZA, Consultant, UK Property Forums

PANEL + SPEAKERS

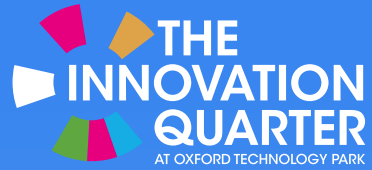
JAYNE MANLEY, Chief Executive, The Earth Trust
IAN PRITCHETT, Managing Director, Greencore Construction

LEWIS KNIGHT, Head of Sustainable Places, Bioregional

18.15 Reception Drinks

19.30 Awards Start

22.30 Awards Finish



JOIN US FOR THE OPEN DAY OF THE BRAND NEW INNOVATION QUARTER AT OXFORD TECHNOLOGY PARK

Thursday 22 September

Doors will be open from 11-3PM

You're welcome to drop in anytime throughout the day and tours are likely to take no longer than 30 minutes.



Register here:
IQOpenDay.eventbrite.co.uk

SAVILLS

Oxford



In Oxford our team of over 120 professionals have expertise across all sectors. Commercial, Residential or Rural, local, national or global with more than 160 years of history, we can help with your future.



Charles Elsmore-Wickens
Head of Cotswold and Chiltern Residential
01865 339 700
07870 999 447
cewickens@savills.com



Richard Binning
Head of Office
01865 269 000
07968 550 312
rbinning@savills.com

savills.co.uk/oxford

